



Hayes Software Systems



Keep your Scanner Charged and Ready to Go!

TIP in Hand for the Symbol SPT 1550



&

TIP in Hand for the Symbol SPT 1800



Check your Scanner

Several weeks before school starts/ends, fully charge your scanner by setting it in the cradle over night. Turn the unit on. You should see aTIP in the top row. If your unit has been out of the cradle for a period of time, aTIP is probably not on the unit. Keeping your unit in the cradle charging will assure that you do not lose the aTIP program.

If aTIP is not on the unit, put the unit in the cradle and press the hot sync button on the cradle (the button in the bottom right hand side of the cradle.) Allow the hot sync to complete.

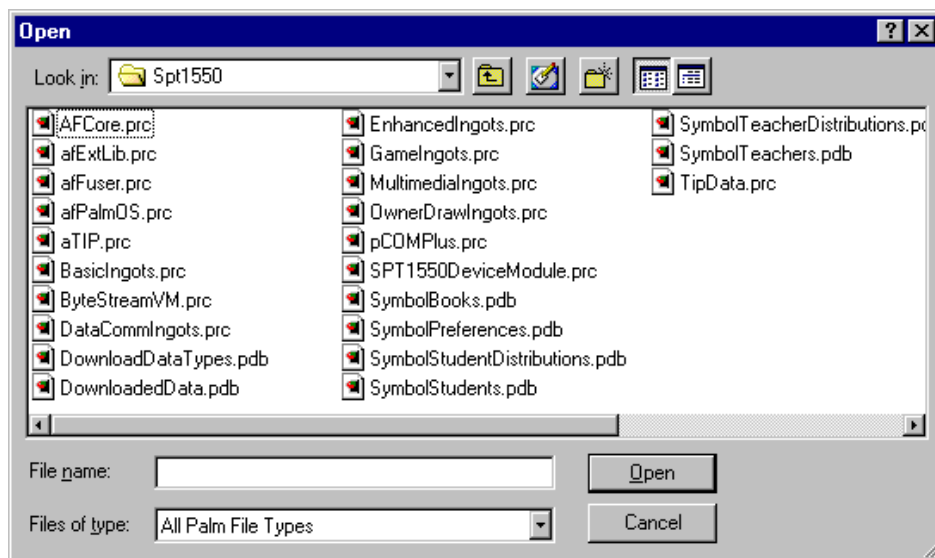
Is aTIP on the unit now? If yes, you are good to go.

If aTIP is not on the unit follow the directions below.

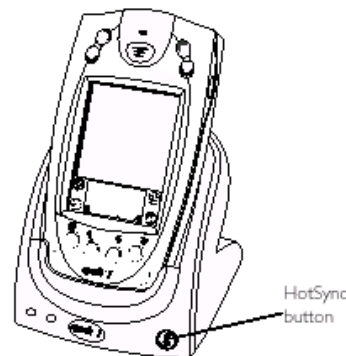
- 1) Installation on the Symbol unit.
 - A. Turn the unit on and tap on the hot sync icon. In the very top right hand corner of the PDA screen should be a name. Record this. If you do not see a name, call Hayes Software Systems.

Installing TIP In Hand on the Symbol is done following the standard Palm OS installation procedure.

- B. Launch or Open the "Palm Desktop" software (a shortcut called "Palm Desktop" was created on your desktop during installation. If not, got to <Start> <Programs> <Palm Desktop> and then Choose "Palm Desktop"). Check the User name in the top right hand corner of the Palm Desktop screen. The user name should match the name you recorded under "A". If it does not, click the down arrow and select it. Click on the "Install" button located on the left-hand-side of the screen and then click on "Add".



- C. Navigate to your Local disk C: and then to your Tipwin folder, open the SPT1550, SPT1800, or Symbol folder and select all of the .pdb and .prc files. This can be done by clicking on the first file, scrolling to the last file and then SHIFT-click.
- D. Click on Open. You are now back on the "Install Tool" screen. Click on "Done". The files will be installed on your handheld the next time you perform a HotSync operation³.



³The HotSync button on the cradle's lower right hand corner looks like this:

